



Flinders Street Perimeter [S] new courses for urban flaneurs

situation.

The northern bank of the Yarra running alongside Flinders Street Station is one of the key connections in the pedestrian network of central Melbourne. It is largely underutilised, functioning solely as a passage space from the CBD or the train station to Southbank and vice versa.

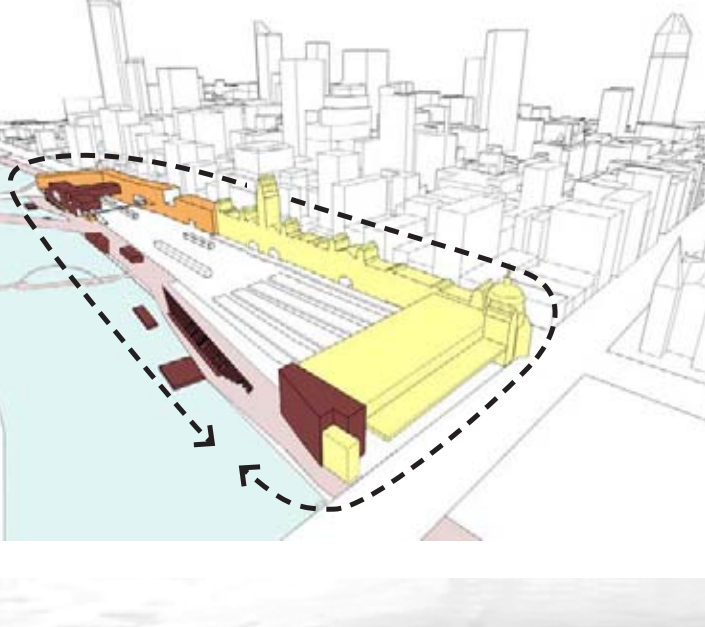
The re-opening of the Sandridge Bridge in 2006 as a pedestrian thoroughfare to complement the Southgate Footbridge has made crossing the Yarra easier, however the connection up to St. Kilda Road remains dingy and the rail yards continue to thwart connection to Flinders as there is only one underpass.

proposal.

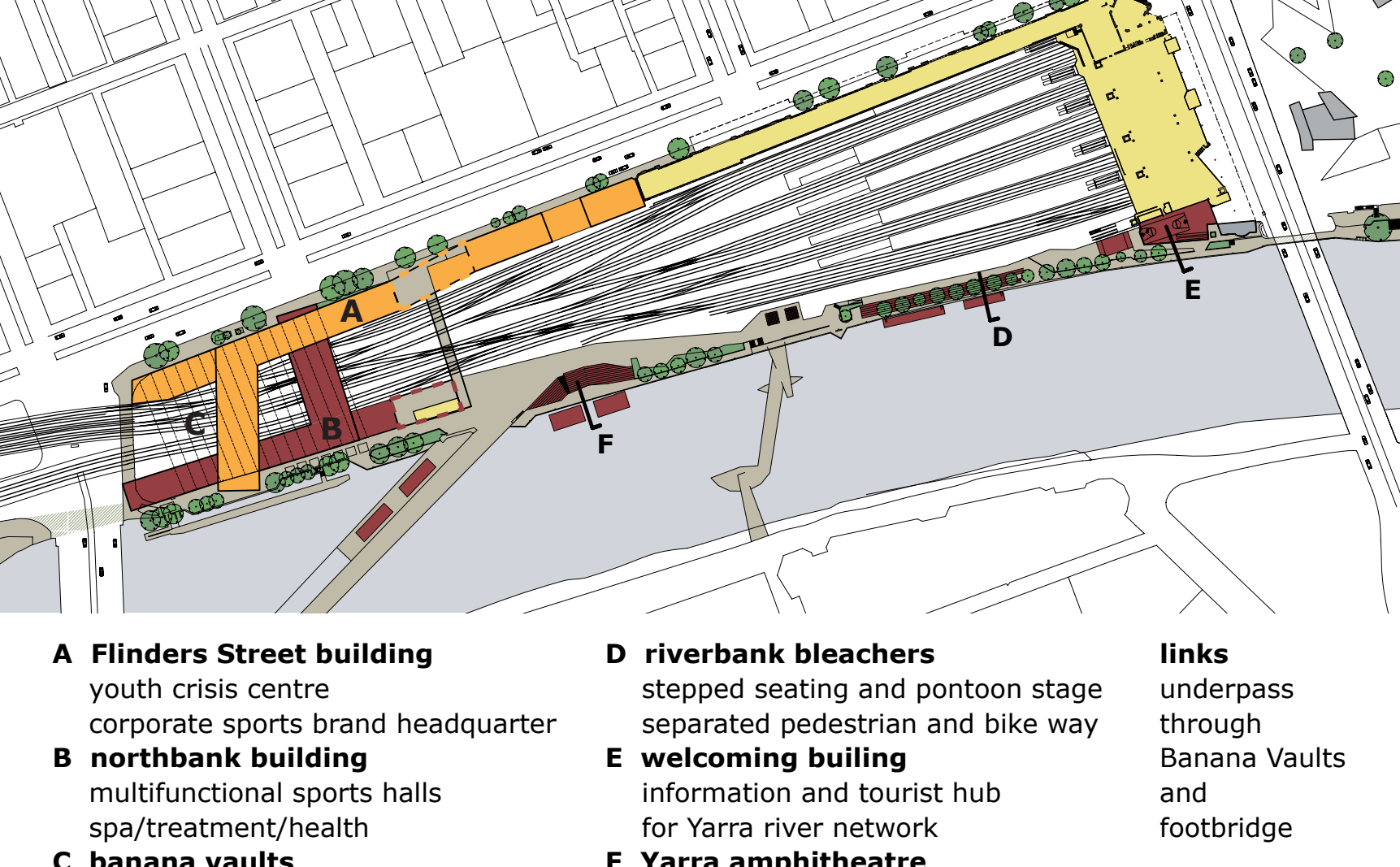
The descent from St. Kilda Road to the river could be more smoothly negotiated by a modest welcome building. Following from this, two other interventions exploiting the slope of the river bank enrich the Northbank promenade, enhancing its appeal to recreation seekers and urban flaneurs alike.

conclusion.

Together with the new buildings straddling the rail yards, these interventions offer a chain of experiences that punctuate the journey from the CBD to Southbank and vice versa. In this way, another facet of Melbourne's sports brand identity might be easily played out along a key avenue within the city's lifestyle and tourism network.



Completing a continuous circuit.



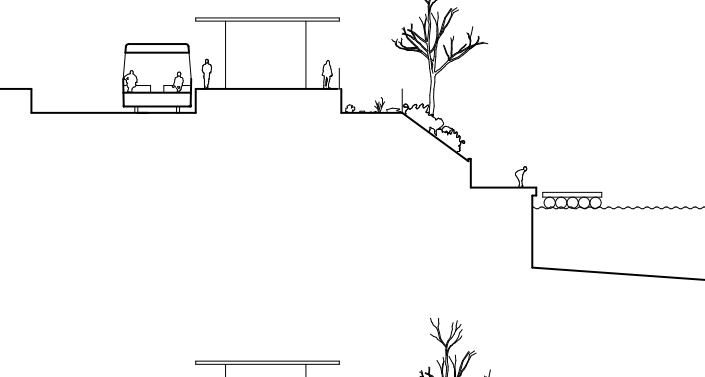
- A Flinders Street building**
youth crisis centre
corporate sports brand headquarter
- B northbank building**
multifunctional sports halls
spa/treatment/health
- C banana vaults**

- D riverbank bleachers**
stepped seating and pontoon stage
separated pedestrian and bike way
- E welcoming building**
information and tourist hub
for Yarra river network
- F Yarra amphitheatre**

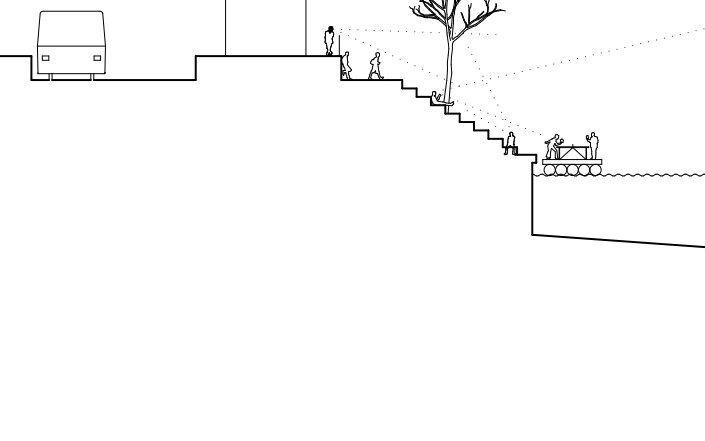
links
underpass through Banana Vaults and footbridge

D-D

old
A single narrow path runs beside the river, bounded by a wall and overlooking a set of seldom used pontoons floating in the water. The outmost platform of the station has been decommissioned; the rail track in front fenced off and used to dump garbage.

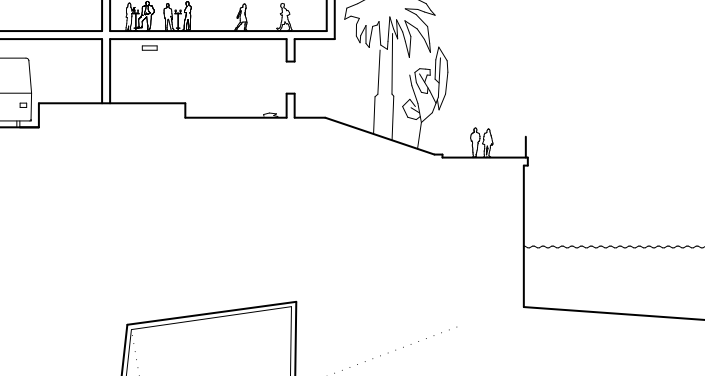


new
Seating descends to the water's edge, looking over the pontoon which could host table tennis and other leisure facilities. The main pedestrian pathway is moved to the top of the embankment to afford a more spacious public space and a stronger connection to the station platforms. The lower path can then be used as a bicycle way.

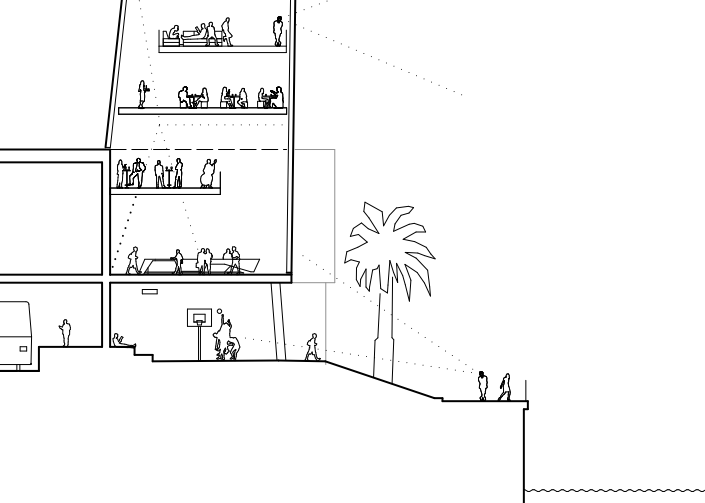


E-E

old
The corner of Flinders Street Station nearest Princes Bridge is occupied by a dated TAB/pokies venue, directly opposite the Arts Centre and overlooking the Yarra. The way down to the riverside promenade is less than inviting and hence underused, whilst the adjacent rail tracks and platform have fallen out of use.

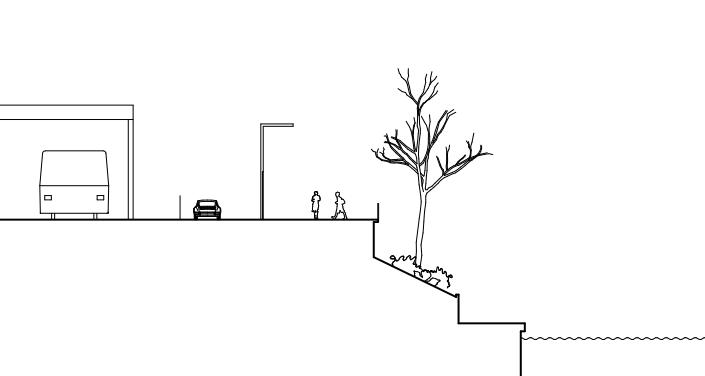


new
The proposal for this area takes the form of a small tower, marking the link to the riverside promenade below. The St Kilda Road level hosts a reception area for booking the various sports and cultural facilities along the station perimeter, and a tourist centre focused on the Yarra River network. Above are three bar/café levels. A street ball court is located on the ground level below.



F-F

old
The site serves only as a space to pass through. Except for some lampposts and timber fences there is little to see or do. Only the view to Southbank attracts pedestrians' attention. The space between the rail yards and the public path is often used for rail-staff parking.



new
At the junction of the Sandridge Bridge and the Northbank promenade, a new amphitheatre faces a floating performance stage on the river with the vista of Southbank behind. Whilst continuing to be a fluid zone for pedestrian and bicycle transit, the site is re-invigorated by the periodic flourishes of performance.

